

50 Years of Movement:

The impact of Ropeways in New Zealand



50 Years

Doppelmayr
New Zealand

6-CLD Shadow Basin
The Remarkables

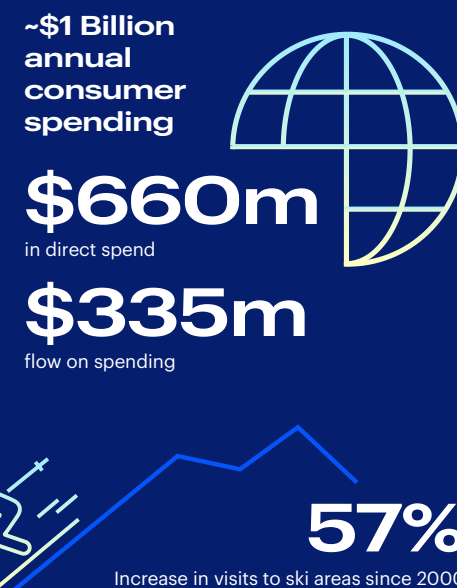
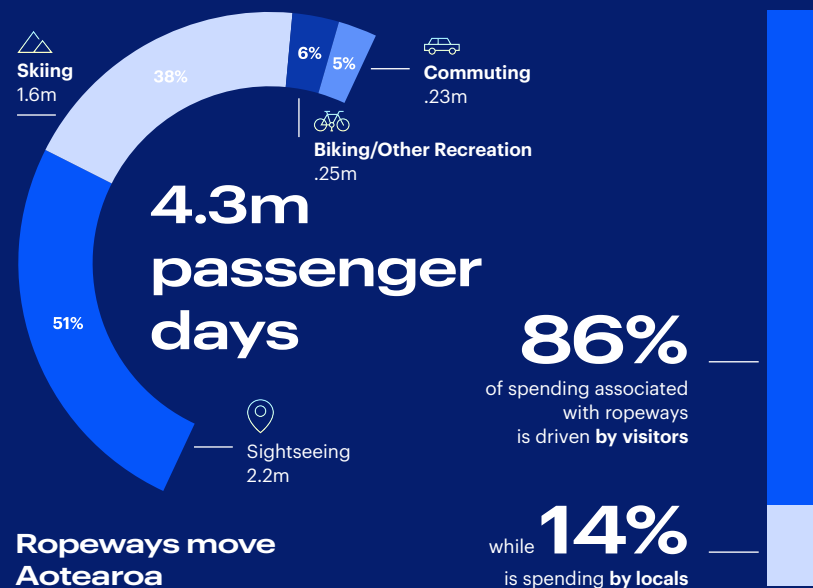


World market leader in cable-propelled mobility

For 50 years, Doppelmayr has shaped New Zealand's visitor economy and transport landscape through world-leading ropeway technology. Since installing its first chairlift at Roundhill Ski Area in the 1970s, Doppelmayr has delivered over 100 ropeway systems at more than 25 ski areas and attractions, enabling the growth of tourism as it is

today. Ropeways are now generating nearly \$1 billion in annual economic activity, supporting over 4,100 jobs and contribute to 1.9% of total visitor spend. They move over 4.3 million passengers each year for skiing, sightseeing and commuting - while encouraging extended stays and higher visitor spend. As visitor needs evolve, Doppelmayr continues to lead, delivering higher-capacity,

year-round solutions and pioneering sustainable, low-impact urban mobility projects like the proposed Queenstown Cable Car. This legacy of innovation, partnership, and economic contribution underscores Doppelmayr's role as a trusted partner and enabler of New Zealand's tourism and transport future.



Regional Impact & 50 Years of Innovation

Over the past 50 years, Doppelmayr has helped shape some of New Zealand's most iconic visitor destinations and regional economies. In places such as Queenstown, Wellington, Rotorua and Christchurch, ropeways have become integral to the visitor experience supporting employment, year-round tourism and infrastructure growth.



In the Queenstown Lakes District, ropeway-linked activity now contributes nearly **\$600 million annually**, with seasonal employment peaking at over **7,000 jobs each winter**. Across all

regions, evidence shows that visitors who use ropeways spend more, stay longer, and explore more widely. This generates an estimated **\$335 million in flow-on spending** each year.



Garreth Hayman,
Chief Executive,
Doppelmayr
New Zealand

A Message from Our CEO

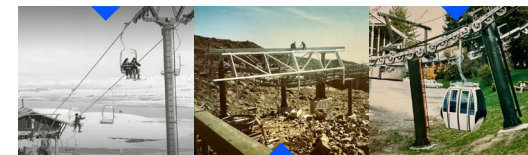
"For five decades we've proven ropeways can unlock hard-to-reach places and power regional economies. Our next chapter brings that same technology to urban areas - moving people efficiently, quietly and sustainably above the traffic. As visitor expectations evolve and cities seek sustainable solutions that integrate into existing transport networks, Doppelmayr is ready to deliver the next generation of mobility."

50 Years of Milestones

Doppelmayr's legacy of innovation in New Zealand is marked by many national firsts:

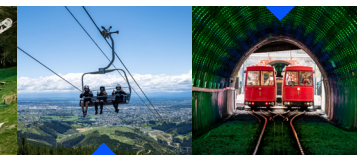
1976

First Doppelmayr chairlift: Double Chair at Roundhill Ski Area.



1988

First detachable gondola: Skyline Queenstown Gondola.



2016

Wellington Cable Car conversion to Doppelmayr Control system.



2020

First D-Line chairlift: Sugarbowl Express at The Remarkables.

1987

First detachable chairlift: Waterfall Express at Whakapapa.

2016

First purpose built mountain bike chairlift in the world: Christchurch Adventure Park.

2017

First gondola on a ski area: McDougall's Combination Lift at Cardrona Alpine Resort.

2023

First D-Line gondola: 10-passenger detachable gondola at Skyline Queenstown.

From alpine slopes to urban corridors, Doppelmayr continues to set new benchmarks and demonstrate what's possible when global expertise meets local ambition.



The Next 50 Years:

Sustainable Mobility at Scale

Ropeways are no longer just for alpine adventures. With proven ability to carry up to 8,000 passengers per hour per direction, efficient build timelines and zero-emission electric drives, ropeway systems are a low-impact answer to New Zealand's urban transport challenges.

Latest innovations

- **Queenstown - Frankton Cable Car** now in detailed planning with Southern Infrastructure, designed to move 3,000 passengers per hour per direction while using minimal land and delivering carbon-free transport.
- **Network studies have identified more than 20 suitable corridors** in Auckland, Wellington and Christchurch where aerial cable cars could extend or replace traditional rapid-transit projects, saving time, cost and emissions.
- **Integrated digital operations** such as Doppelmayr Connect will give operators real-time insight into energy use, maintenance and passenger flow, ensuring world-class reliability.

Learn more about upcoming projects, partnership models and technical resources at **doppelmayr.com**.

Ready to join the movement?

Contact our team to explore how ropeway mobility can elevate your region's transport and visitor experience.

Doppelmayr New Zealand Ltd

39 Islington Ave, Islington, Christchurch, 8042
PO Box 16192, Hornby, Christchurch, 8441
New Zealand
info@doppelmayr.nz

doppelmayr.com/nz